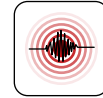




# Oyster Shell®



## Quality Modular Structures

### Oyster Shell®: - quality, strength and durability

The Oyster Shell® design is a modular concept and therefore allows one to design and build a wide variety of units featuring different sizes, layouts and components.

### Everything is possible:

From a 55sqm, 1 bedroom unit up to a 160sqm, 6 bedroom duplex featuring a huge terrace on the first floor.

Pictured below as well as components listed below are part of our 'Andromeda' design, which features 3 bedrooms, 1 bathroom, 1 kitchen & dining room combination, 1 living room and 2 porches.

Oyster Shell®, 'Andromeda' concept allows **2 x 850 sq/ft (80sq/m) houses to fit into a 40ft container** (by dimension as well as weight), for ease of transportation.

**Erection and full completion of an 850sq/ft house in approximately three days** (including lights and running water) after arrival of container, provided that the base foundation slab has been laid and the utility connections are in place.

Core construction consists of painted and finished reinforced light weight concrete panels, with internal high density foam insulation.

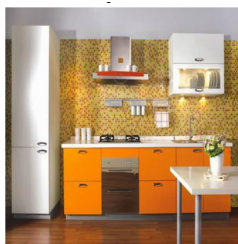


**Built to Florida US codes for Hurricane and Earthquake resistance** (specifications are listed in the International Standards).

The 'Andromeda' was designed to specifications of the Trinidad & Tobago government for their long term government housing project.

### Included and pre-fitted in the 850 sq/ft 'Andromeda' single storey house:

- 3 solid core wood exterior doors
- 3 hollow core interior doors
- 9 170 x 120 windows
- 2 80 x 80 windows
- Electrical outlets on walls to code
- Electrical switches on walls to code
- Walls primed and painted
- 9 ceiling lights
- Electrical conduit
- Plumbing
- Shower
- Bath sink with faucets
- Toilet
- Kitchen cabinet with sink
- Kitchen faucets
- Electric water heating unit 80L



As with everything modular there are plenty of options that can be exchanged or added:

**Flooring:**  
stone or terracotta tiles of any kind, wood of any kind, PVC, etc

**Kitchen:**  
Sinks, faucets, cabinets, fridges, stoves etc depending on requirements

**Bathroom:**  
Basins, cabinets, shower cabin, faucets depending on requirements

**Windows:**  
Wood, aluminium, PVC frames with single or double glazing

**Doors:**  
Exterior doors and interior can be chosen depending on requirements

**Electrical outlets:**  
Amount and positions of outlets can be arranged depending on requirements

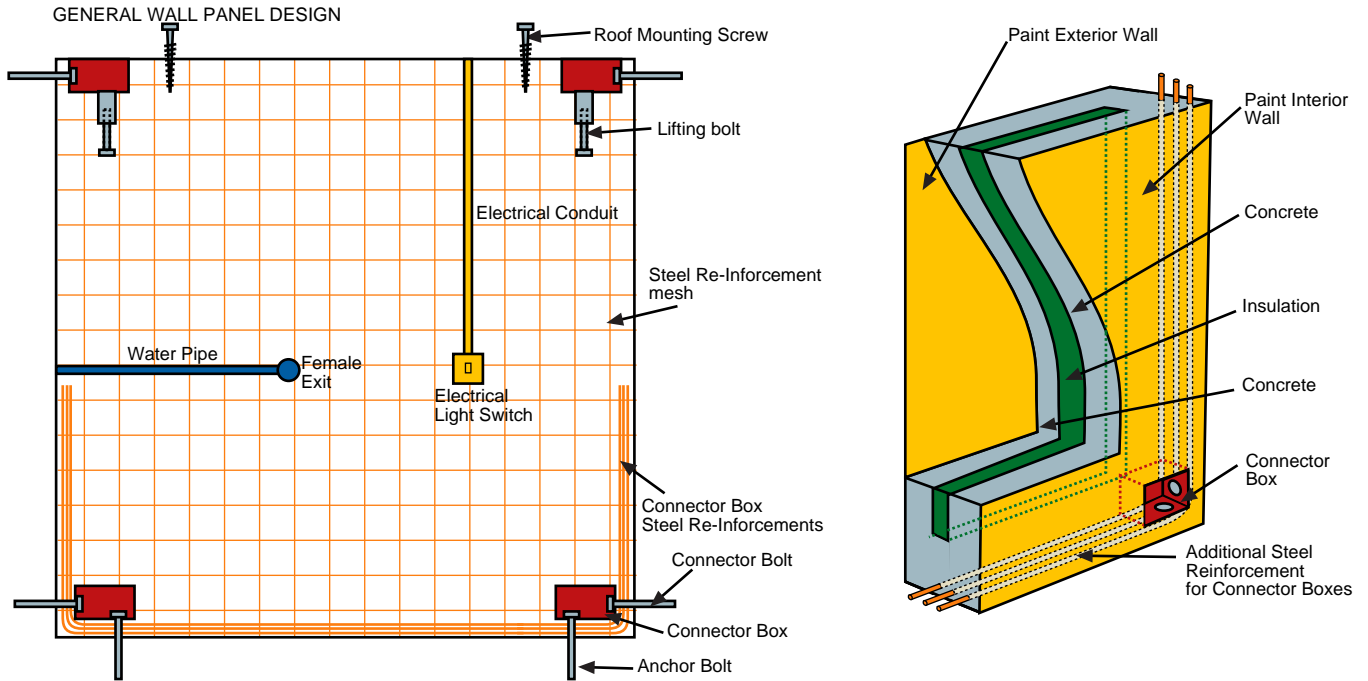
**Floor plan:**  
Virtually anything possible even a U shape or square shape featuring a yard or garden in the center of the unit. Single story or duplex with balconies and terraces

**Accessories:**  
We also offer solar panels and mosquito screens

**Roof:**  
With excellent insulating properties.

**Key design aspects;**

- Ease and speed of erection
- To suit areas where there is a high risk of severe weather conditions
- Nature of the design and construction avoids potential issues with sourcing or theft of building materials
- To suit areas where lack of skilled labour is a factor
- Nature and strength of the design gives a high security level
- Design parameters lends itself to construction units for clinics, schools, and other modular units



3 BEDROOM HOUSE 'ANDROMEDA'



Front Elevation

3 BEDROOM HOUSE 'ANDROMEDA'



Left Elevation

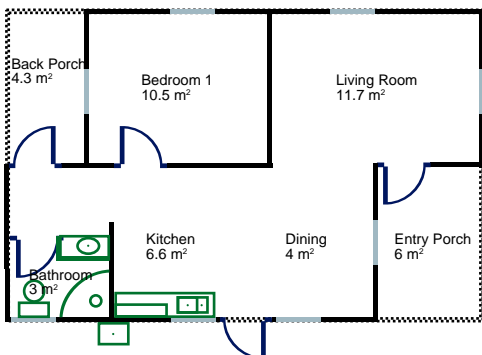


Back Elevation



Right Elevation

1 BEDROOM HOUSE - EXAMPLE



3 BEDROOM HOUSE 'ANDROMEDA'

